

How to setup RJ45 Ethernet (LAN) connection

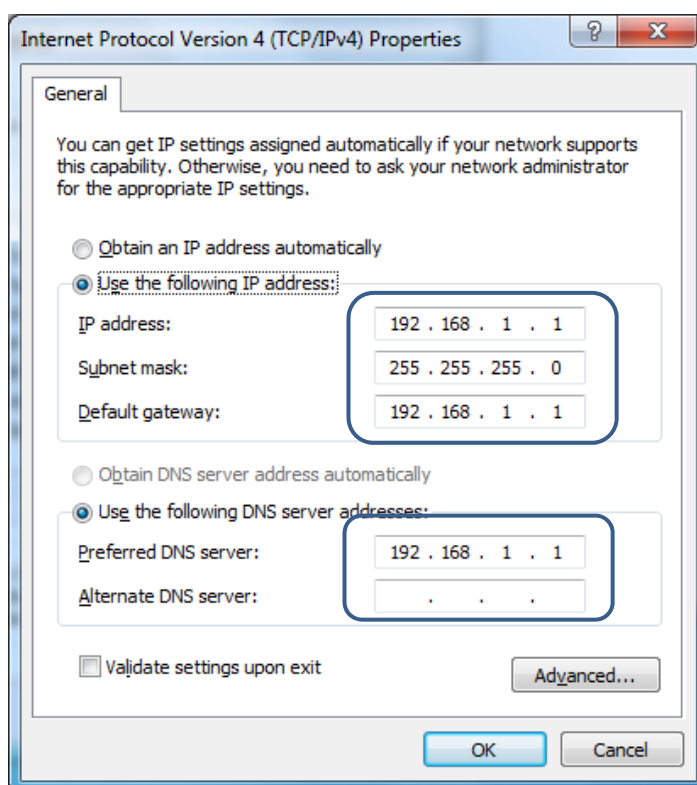
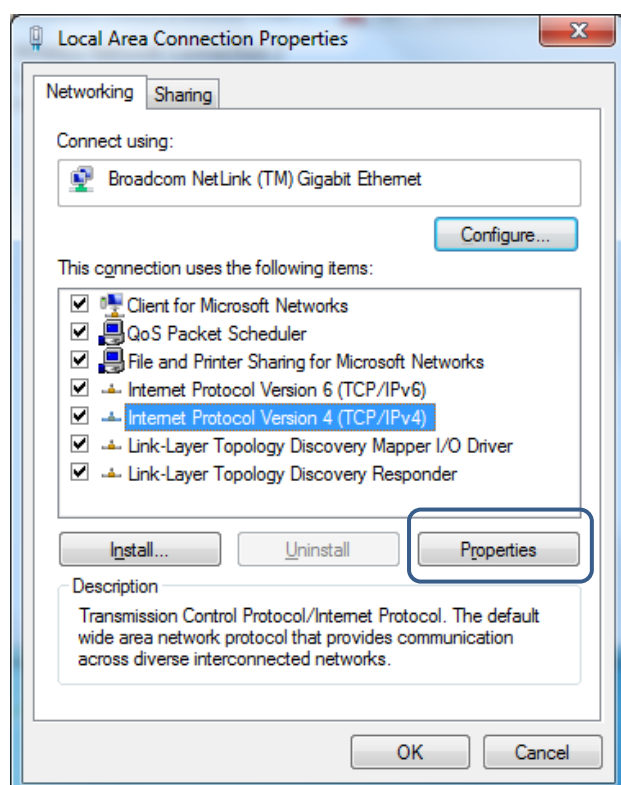
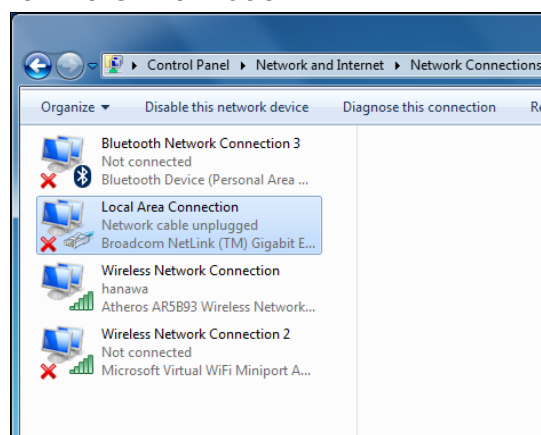
A default IP setting of the MB2 controller is as the below.

ID	Default
IP Address	192.168.1.120
Subnet Mask	255.255.255.0
Default Gateway	192.168.1.1
Port No.	55000

1. Peer to Peer connection

*Need a cross cable depend on the PC

Change the TCP/IPv4 in the Local Area Connection in the PC as the below. If you want to connect back to other networks, you may need to revert to original settings. Check with your network administrator for more information.



Connect the RJ45 Ethernet (LAN) cable between PC and MB2 controller after setup the TCP/IPv4. And go to "Preferences" → "Communication" and confirm the checked sign ✓ in the default box, then click "Done" button to close.

Communication Settings

USB

Install USB Driver

View Installation Manual USB Driver

MB2 COM port (RS232C)

Choose COM port

Baud rate

19200

38400

57600

115200

Delimiter

None

CR

LF

CR/LF

Sum check

Arithmetic

Invert

None

Echo back

None

Use

Data length 8 bit

Stop bit 1 bit

Parity None

LAN

View TCP/IP v4 Settings

Click each cell to update.

	ID	IP address	Subnet mask	Default gateway	Port no.
<input checked="" type="checkbox"/>	Default	192.168.1.120	255.255.255.0	192.168.1.1	55000
<input type="checkbox"/>					
<input type="checkbox"/>					
<input type="checkbox"/>					

Delete

Register

Done

Go to "Comm Selection" on the menu bar and click the LAN icon to start a connection.

Comm Selection

Choose a communication method [Easy setup : WIFI]

WIFI

USB

RS232C

LAN

☒ Not show the tutorial

2. Network connection

MB2 controller enable to store any IP address to connect to the network. Go to "Preferences" → "Communication" and input all information such IP Address. Check the sign ✓ in the box and click "Register" button then click the "Done" button to close.

←

USB

Install USB Driver

View Installation Manual USB Driver

MB2 COM port (RS232C)

Choose COM port

Baud rate

19200 38400 57600 115200

Delimiter

None CR LF CR/LF

Sum check

Arithmetic Invert None

Echo back

None Use

Data length 8 bit

Stop bit 1 bit

Parity None

LAN

View TCP/IP v4 Settings

Click each cell to update.

	ID	IP address	Subnet mask	Default gateway	Port no.
<input type="checkbox"/>	Default	192.168.1.120	255.255.255.0	192.168.1.1	55000
<input checked="" type="checkbox"/>	TEST	192.168.1.10	255.255.255.0	192.168.1.1	55000
<input type="checkbox"/>					
<input type="checkbox"/>					

Delete

Register

Done

Check with your network administrator in regards with the IP Adress.